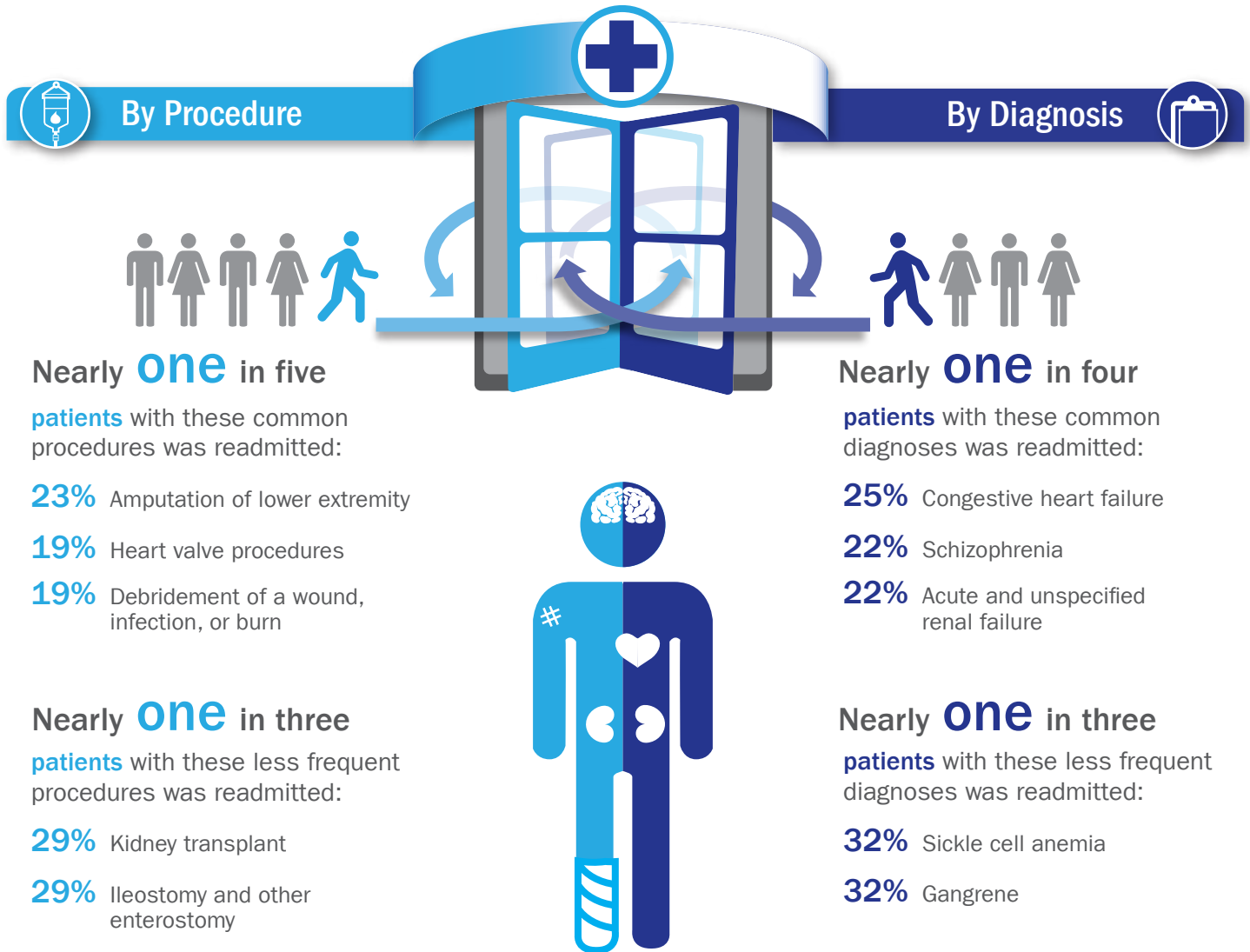


# 30-DAY READMISSION RATES TO U.S. HOSPITALS

Healthcare Cost and Utilization Project (HCUP) data from 2010 provide the most comprehensive national estimates of 30-day readmission rates for specific procedures and diagnoses.\* Examples include:



## Readmission Rates by Payer

Medicaid and Medicare patients have a higher percentage of readmissions than other payers

■ **Procedure:** Amputation of lower extremity

■ **Diagnosis:** Congestive heart failure



\*Readmissions were for all causes and did not necessarily include the same procedure or diagnosis as the original admission (index stay).